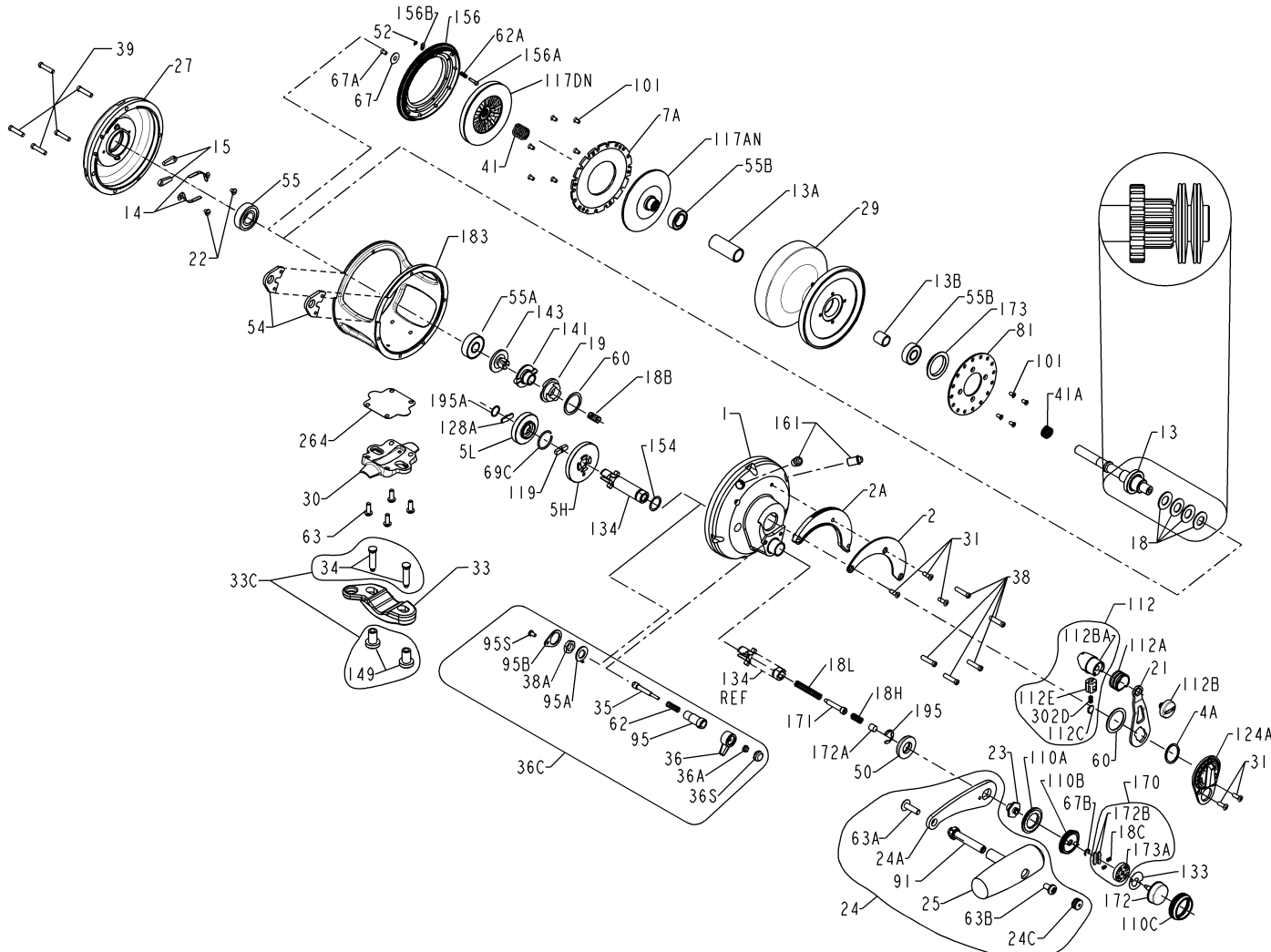




PARTS LIST FOR MODEL 50VSX



<u>KEY NO.</u>	<u>DESCRIPTION</u>	<u>PART NO.</u>
35	Click Tongue	035 070VS
36	Click Lever	036N050
36A	Click Lever Nut	036 700
36C	Clicker Assembly	036C050VSW
36S	Click Button Cap	036S080ST
38	Right Side Plate Screw (5 req)	038 050VSX
38A	Click Bushing Nut	038 710
39	Left Side Plate Screw (5 req)	039 050VSX
41	Drive Plate Bearing Spring	041 050
41A	Drag Spring	041 070
50	Gear Stud Shield	050 050VS
52	Drag Cover Lock Retaining	052 910
54	Harness Lug (2 req.)	054 050T
55	Left Side Ball Bearing	055 080
55A	Right Side Ball Bearing	055 050
55B	Spool Ball Bearing (2 req.)	055 080ST
60	Drag Thrust Washer (2 req.)	060 050
62	Click Spring	062 050
62A	Drag Cover Lock Spring	062 545
63	Stand Screw (4 req.)	063 030T
63A	Handle Rivet Screw	063A050
63B	Handle Knob Screw	063 050
67	Pinion Retaining Washer	067 070
67A	Pinion Retaining Screw	067A070
67B	Shifter Retaining Ring	067 030VS
69C	H / L Gear Retaining Ring	069C245
81	Ratchet Disk Plate	081 050
91	Handle Rivet	091N050
95	Click Tongue Bushing	095 070
95A	Click Bushing Washer	095A050
95B	Click Retaining Plate	095B070
95S	Click Retaining Plate Screw	023 750
101	Drag / Ratchet Screw (10 req.)	101 030
110A	Handle Screw Locking Ring	110A030VS
110B	Shifter Base	110B030VS
110C	Shifter Button Retaining Ring	110C030VS
112	Drag Lever Knob Assembly	112 030VS
112A	Drag Knob Sleeve	112A030VS
112B	Drag Knob Screw	112B070
112BA	Drag Lever Knob	112B030VS
112C	Drag Click Plate	112C030VS
112E	Drag Lever Click Plate Housing	112E030VS
117AN	Inner Drive Plate Assembly	117AN070
117DN	Drive Plate Assembly	117DN070VS
119	Hi/Low Gear Shift Plate	119 024KG
124A	Bridge Cover Assembly	124L050VS
128A	Low Gear Drive Plate	128A024KG
133	Shifter Retaining Plate	133 030VS
134	Gear Stud	134N050VS
141	Cam Follower	141 050VS
143	Preset Screw	143 050VS
149	Rod Clamp Nut (2 req.)	149 070
*154	*Gear Stud Shim (As Needed)	*154 080
156	Drag Cover Assembly	156N050VS
156A	Drag Cover Lock Pin	156A030VS
156B	Drag Cover Lock Plate	156B030VS
161	Drag Locating Pin Asm (2 req.)	161C030VSW
170	Shifter Catch Assembly	170 030VS
171	Shifter Plunger (Screw)	171 030VS
172	Shifter Button	172 030VS
172A	Shifter Spacer	172A050VS
172B	Shifter Catch Plate(2 req)	173 030VS
173	Spool Bushing	173 050VS
173A	Shifter Catch Holder	173A030VS
183	Tube Frame	183N050VSW
195	Retaining Ring	195 040
195A	Spiral Retaining Ring	195 024KG
264	Stand Gasket	264 030VS
302D	Drag Click Plate Spring	302D525MAG
* One Shown		

<u>KEY NO.</u>	<u>DESCRIPTION</u>	<u>PART NO.</u>
1	Right Side Plate Assembly	001N050VSX
2	Quadrant Ring	002 050VS
2A	Quadrant Ratchet / Spacer	002A050VS
4A	Teflon Thrust Washer	004 012LT
5H	Main Gear (High Speed)	005N050VSHS
5L	Main Gear (Low Speed)	005N050VSL
7A	Drag Washer	007A050VS
13	Pinion Gear	013 050VSX
13A	Spool Sleeve	013B050VSX
13B	Pinion Gear Sleeve	013B070

<u>KEY NO.</u>	<u>DESCRIPTION</u>
14	Dog Spring (2 req.)
15	Dog (2 req.)
18	Clutch Spring (4 req.)
18B	Drag Spring
18C	Shift Catch Spring (2 req)
18H	Shift Spring (Heavy)
18L	Shift Spring (Light)
19	Drag Cam
21	Drag Lever
22	Dog Spring Screw (2 req)

<u>PART NO.</u>
014 050
015 050
018 050TW
018 349
018C015KG
018H030VS
018L030VS
019 050VS
021 050VS
022 109

<u>KEY NO.</u>	<u>DESCRIPTION</u>
23	Handle Screw
24	Handle Assembly
24A	Handle Blank
24C	Handle Knob Cap
25	Handle Knob Assembly
27	Left Side Plate Assembly
29	Spool Assembly
30	Stand
31	Drag Lever/Quad Screw (5 req)
33	Rod Clamp
33C	Rod Clamp Kit
34	Clamp Screw (2 req.)

<u>PART NO.</u>	<u>DESCRIPTION</u>
023 030VS	
024 030VS	
024 030VS-1	
024C050M	
025 050M	
027N050VSX	
029L050VSX	
030 050VS	
031T070	
033 070	
033C070VS	
034 070VS	